

# OT4me



**Occupational Therapy**  
and Sensory Integration Service in schools





We're on a mission to help children to develop the necessary skills to access learning and life skill opportunities.

LIZZIE AND LOUISE

OT4me is an independent occupational therapy service specialising in sensory integration, Developmental Coordination Disorder (DCD)/Dyspraxia and Sensory attachment Intervention.

We believe in providing a bespoke service that that will enable development of the young persons full potential.

We offer a quality, evidence based service and pride ourselves on being highly qualified and keeping up to date with best practice and new developments in the field. This is to ensure we offer timely therapeutic input and support.

When working with children, we believe that assessment should be fun and engaging for the child as well as gaining comprehensive information about their functional abilities.



Do any of the children in your school...



- Have poor attendance?
- Abscond from the classroom or school frequently?
- Deterioration in behaviour when demands are placed on them?
- Make lots of noise during transitions?
- Cover their ears or complain of noise in the classroom?
- Bump into other children and cause accidental injuries?
- Respond negatively to accidental touch?
- Struggle to dress themselves after P.E?
- Difficulties to co-ordinate themselves in PE or team games?
- Struggle to make friends or maintain friendships?
- Struggle to sit still at carpet time or learning time?
- Have problems with handwriting?
- Frustrations with reading and coping from the board?
- Have poor attention and concertation skills?

If so, an occupational therapy service would be appropriate for you.



## What is occupational therapy?

Occupational Therapy aims to promote independence in all areas of a person's life. For the person this can include participation in socialisation, education and daily living skills.

Occupational therapists aim to improve the ability to function in daily life and to perform tasks that are meaningful and purposeful. Our functional ability is related to all aspects of our development including physical, social, emotional and mental.

We specialise in sensory integration assessment and treatment and Developmental coordination Disorder (DCD)/dyspraxia.



## What we offer?

OT4me works in partnership with schools, and other providers of education settings to provide occupational therapy services. We also work closely with pastoral services.

## How we can help your school?

Occupational therapy assessment/ recommendations to establish the child's difficulties and strengths within the classroom

Sensory integration assessments/ recommendations to understanding participation difficulties in the curriculum

Sensory integration strategies and plans to assist children to successfully access the curriculum

Support with developing sensory circuits

Environmental assessments/support/advice to enhance the children's productivity in classroom activities

Self regulation support/recommendations and interoception curriculum

EHCP contributions

Behaviour support using sensory strategies/plan

Visual perception assessments and recommendations

Support with dyspraxia assessments and diagnosis

Staff training to upskill the staff team

Expert consultation

## What difference we have made in schools

“ I am writing to express my thanks for all the work you have done with both pupils and staff here at St Hughs since the summer. Throughout the whole process you have been a joy to work with - from answering emails promptly to being endlessly flexible with therapy dates, timings and even venues! You have also put up with endless questions from a nosy SENCO and opened my eyes to a number of different resources and research.

The pupils have absolutely loved your therapy sessions, with both boys literally skipping to each one. The rapport you have built with the pupils, staff and parents has been second to none and helped these boys make good progress. Attendance at review meetings has also cemented these relationships.

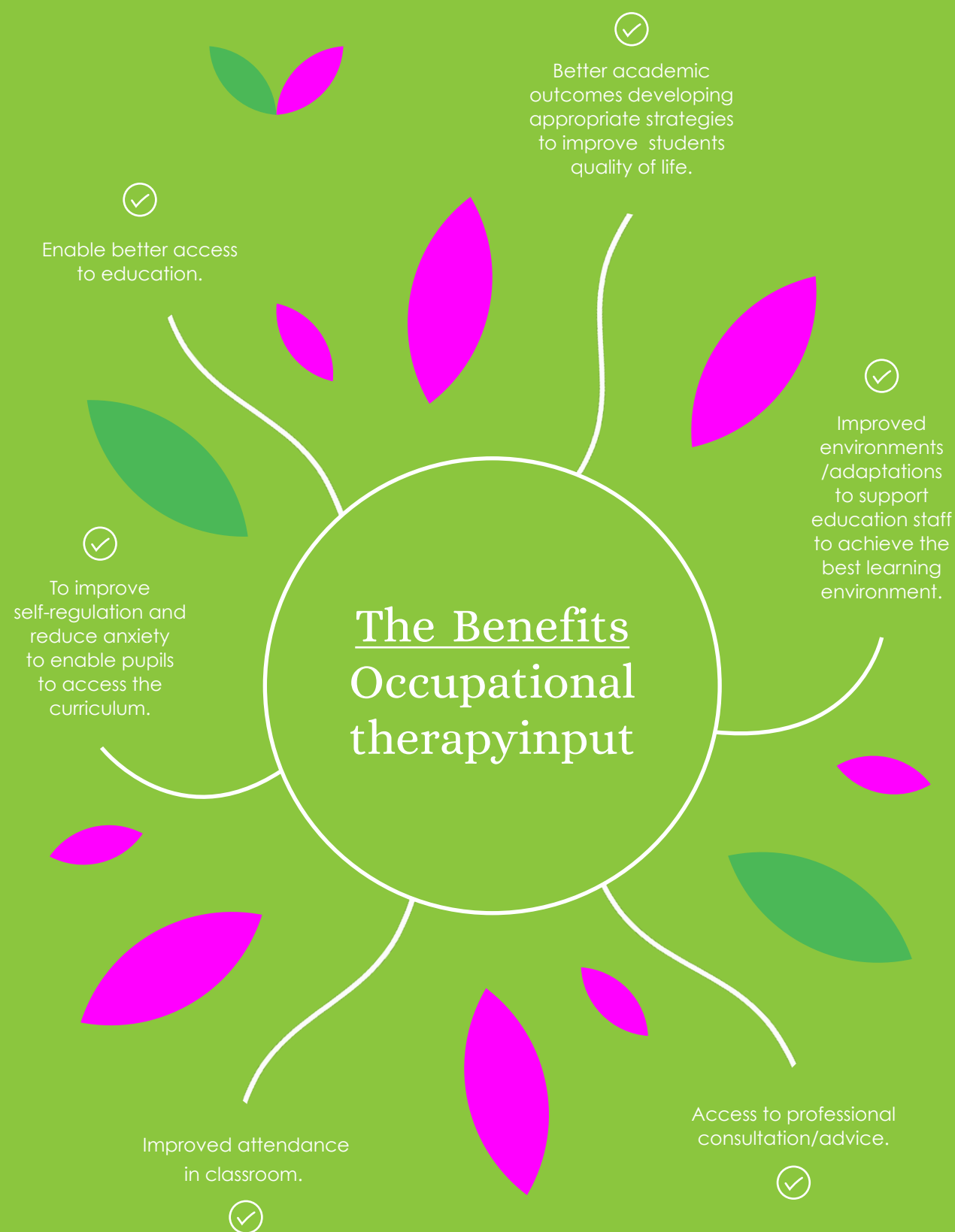
The training sessions you have delivered have been personable and relevant and prompted many a discussion in the staff room afterwards. I am excited about our journey to integrate the interoception curriculum and will keep you up to date with our progress.

KATE WAITE SENCO AT ST HUGH'S PRIMARY SCHOOL

“ 'I thoroughly enjoyed the training and felt that it was very informative and beneficial to our practice. I feel with our understanding of the sensory integration we can support learners at school and within class environment. I feel the training has enhanced my knowledge in more depth.'

AMBBER WAHID , TEACHING ASSISTANT, MEADOWCROFT SCHOOL





We would love you to get in touch with us to discuss your school's requirements and how we can best support you.

**Lizzie Huxford**  
Specialist  
Occupational Therapist  
and Sensory Integration  
Practitioner  
07538 423 099



**Louise Holdsworth**  
Specialist  
Occupational Therapist  
and Sensory Integration  
Advanced Practitioner.  
07850 535 965



#### How does the service work?

We will discuss your specific requirements in more detail in a complimentary consultation and discuss how we can work in partnership with you to improve your children's educational outcomes.

We promise to be cost effective, time effective and clinically effective.

Sessions	Investment
Full day per week	£500
Two days per week	£900
One year contract	Full day price £480
(Please note that our provision is term time only) If your school is located in York milage will not be charged.	

[www.ot4me.co.uk](http://www.ot4me.co.uk)



**Occupational Therapy  
and Sensory Integration Service  
at schools**

Call us on:

07538 423 099

07850 535 965

**[www.ot4me.co.uk](http://www.ot4me.co.uk)**